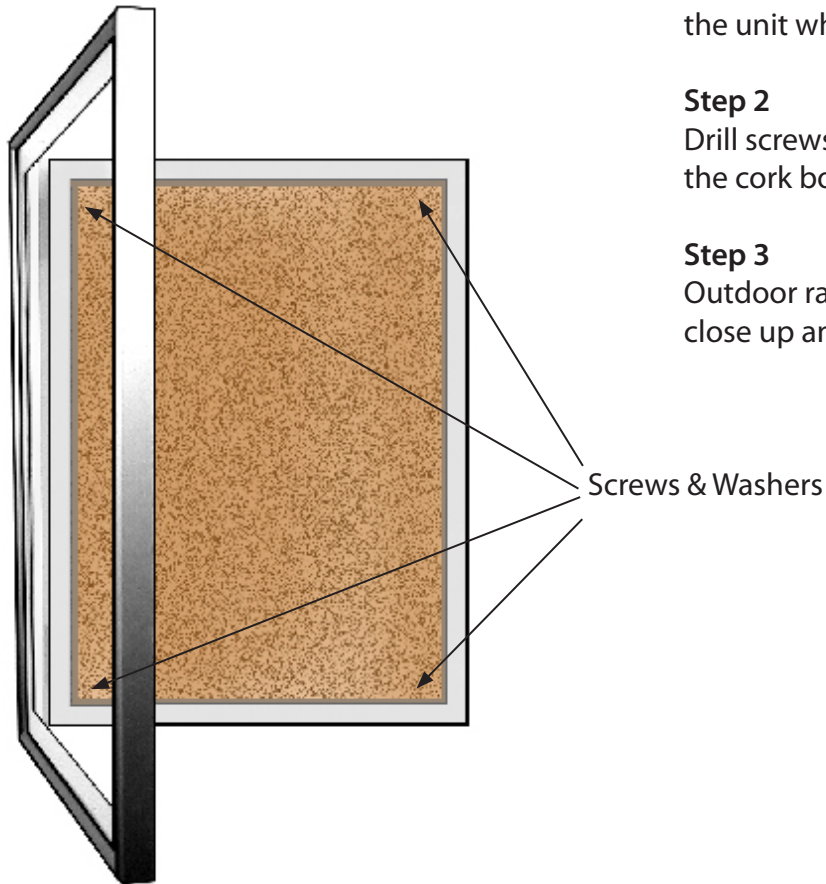


Instruction Sheet

Wall Mounting - Outdoor Enclosed Poster Cases



Step 1

Drill holes in each of the four corners of the cork board (make sure drain holes are on the bottom of the unit when drilling into wall).

Step 2

Drill screws into the wall (use washers to protect the cork board from the screw pressure).

Step 3

Outdoor rated clear sealant can then be used to close up any holes to protect the display.



Simple hand tools required: Level, Drill, Screwdriver

Must be Surface Mounted. Do Not Inset into the Wall.